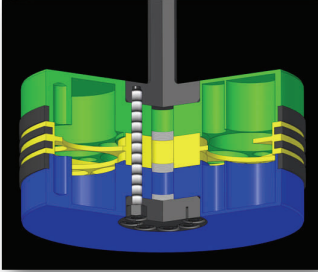


Pistons and Rods

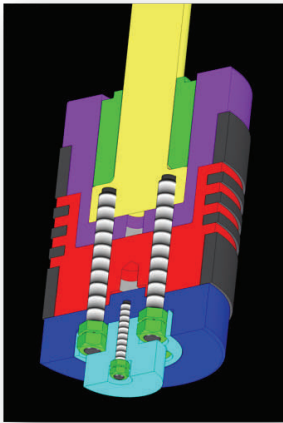
Compressor Pistons and Rods

Replacement pistons and rods are available in numerous sizes, configurations and materials. Replacement components can generally be categorized as replications or performance enhanced. Replicated components effectively clone original designs, while performance-enhanced components can provide redesigned concepts that optimize maintenance ease, service life, and safety.



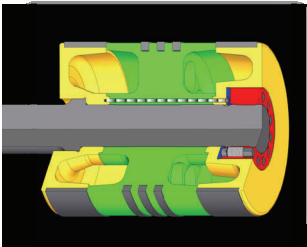
Segmental Pistons and Thru-Bolt Rods

- Piston segments and seal elements are removable without disturbing rod
- Existing rods reused for cost savings
- Piston body is permanently attached to rod
- Segments accurately torqued to piston body with multi-studs
- Piston end clearances are not disturbed
- Heavy, radial thickness rider rings provide greater stability
- Riders can be indexed to new angular running position



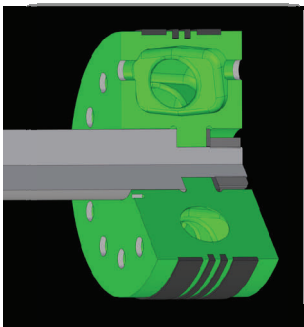
Three Piece Pistons and Flanged Multi-Stud Rods

- Complete piston id removable from cylinder without disturbing rod
- Piston accurately torqued to rod flange with multi-studs
- Piston end clearances are not disturbed
- Heavy, radial thickness rider rings provide greater stability
- Rings readily install in the open-ended grooves
- Riders can be indexed to new angular running position
- Cost effective replacement of individual piston pieces



Three Piece Pistons and Thru-Bolt Rods

- Offers same rider ring features as flanged multi-stud piston attachment
- Piston serviceability limited
- Safety and torque limitations still a concern



One Piece Pistons and Thru-Bolt Rods

- Rod and piston removal from cylinder required to service piston
- Safety and torque concerns with the piston-to-rod spanner nut attachment
- Limited rider ring radial thickness due to required stretching over assembly



Reciprocating Compressor Experts

125 Steubenville Ave. • Cambridge, Ohio 43725

Phone: (740) 435-0240 • Fax: (740) 435-0260

Visit our websites: www.ACIServicesInc.com

www.CompressorConnection.com